

VEHICLE INSPECTION REPORT

MM18HXZ

Peugeot Partner 850 SE 1.6 BLUEHDI 100PS

Non Runner
Inspection

Serious Damage?	No	Vehicle	
		VAT	Plus VAT
		V5	Buyer To Apply

Details

Reg. date	29/06/2018	VIN	VF37DBHY6JN523823	CAP Below	£1,500.00
Year	2018	Body Style	Panel Van L1	Gearbox	MANUAL
Mileage	129,206 Miles Not Warranted	MOT Due	Expired	Gears	5
Fuel Type	Diesel	CAP Clean	£2,225.00		
Colour	WHITE	CAP Average	£1,925.00		

*NON RUNNER - TURNS OVER WILL NOT START**WARNING LIGHT ON DASH* AD-BLUE, SIDE LOAD DOOR

Tyres
NSF

NSR

OSF

OSR

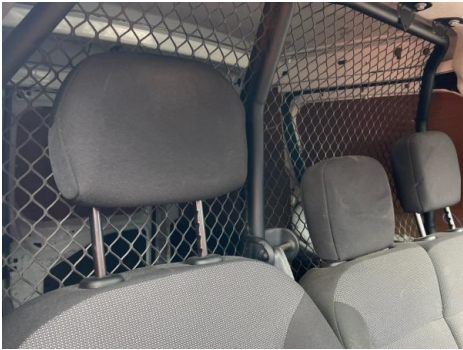
Spare

Features

- Cruise control
- Radio/CD
- Front electric windows
- Drivers airbag
- Passenger airbag
- Central locking
- Cloth seat trim

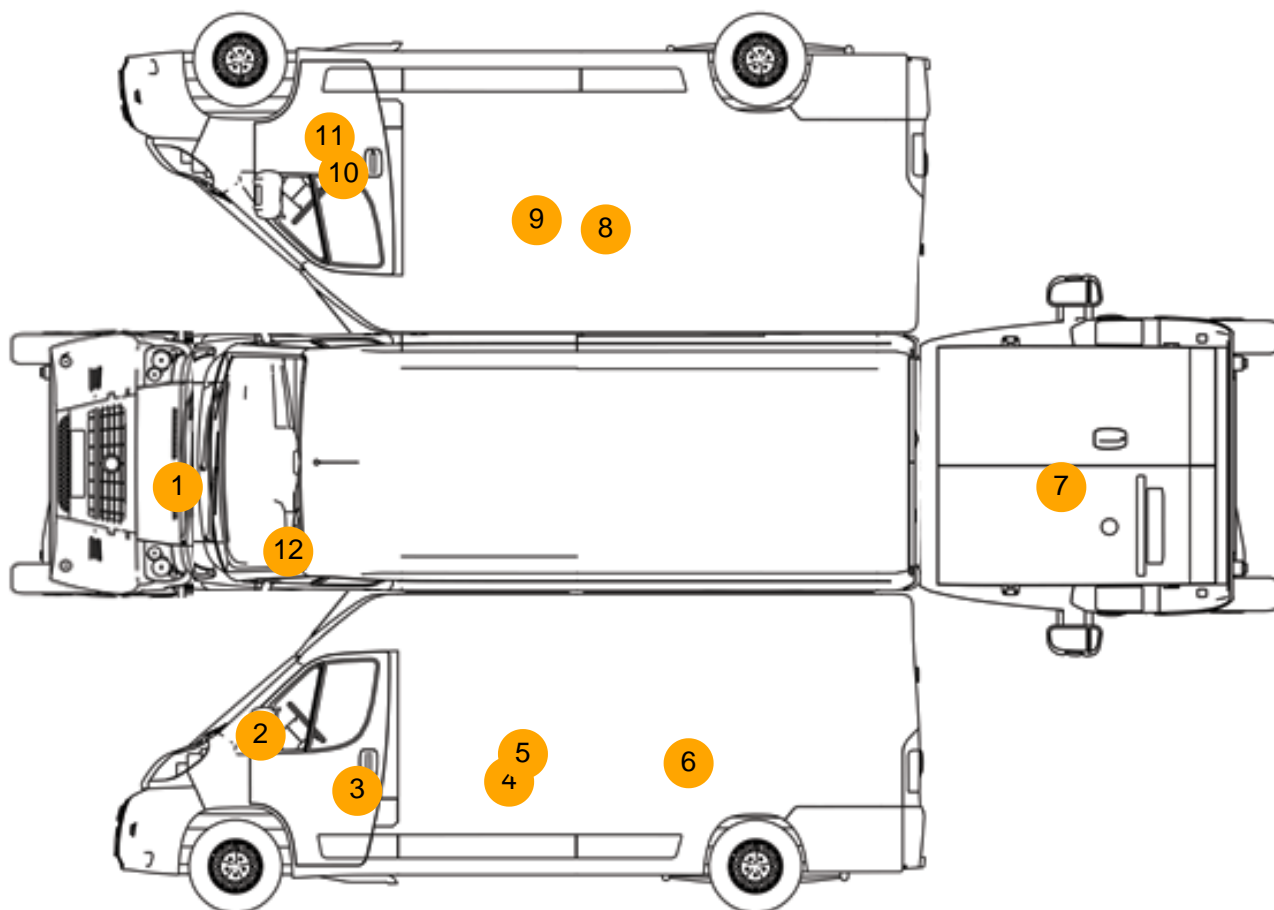
Photos







Condition Check



Damage Photos



1: Bonnet
Chipped
Multiple Chips



2: A Post ns
Chipped
Multiple Chips



3: Door nsf
Chipped
Multiple Chips



4: Qtr Panel nsr
Chipped
Multiple Chips



5: Qtr Panel nsr
Scratched
Over 25mm Thru Paint



6: Qtr Panel nsr
Dented
Over 30mm



7: Door osr
Chipped
Multiple Chips



8: Qtr Panel osr
Chipped
Multiple Chips



9: Qtr Panel osr
Scratched
Over 25mm Thru Paint



10: Door osf
Chipped
Multiple Chips



11: Door osf
Dented
Over 30mm



12: Screen Front
Cracked
Replace



13: Door Pad osf
Soiled
Heavy



14: Seat Base Cover nsf
Soiled
Heavy



15: Door Pad nsf
Soiled
Heavy



16: Carpets Front
Torn
Over 10mm

Interior

Carpet Condition	Poor	Upholstery Condition	Poor
Seat Condition	Poor	Odour	-
Engine Runs		Fault	